



Israeli Hostilities on Lebanon

SITUATION REPORT #26

25 October 2024 - Hour 18:00



SITUATION OVERVIEW

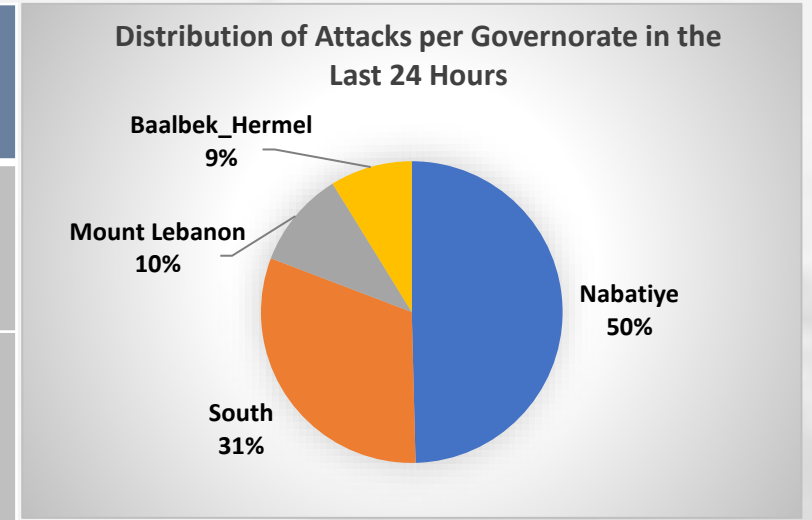
- During the past **24** hours, **125** airstrikes and shelling were recorded in various areas of Lebanon, mostly concentrated in the South and Nabatiyeh, bringing the total number of attacks since the beginning of the aggression to **11,085**.
- The Lebanese Ministry of Health issued the toll of martyrs and injuries during the past **24** hours, where **41** martyrs and **133** wounded were recorded, bringing the total number since the start of the aggression to **2,634** martyrs and **12,252** wounded.
- To date, **1,097** approved shelters for IDPs have been opened and the number of approved shelters that have reached their maximum capacity has reached **929**.
- The movement of displacement continues from areas subjected to daily attacks to safe areas, as the total number of registered IDPs reached **190,975** IDPs in approved shelters (**43,712 families**), with the highest percentage of IDPs recorded in Mount Lebanon Governorate and Beirut; however, the number of displaced is estimated to be much higher.
- The **National Committee for the Coordination of Crisis Response Operations** is working with all relevant ministries to secure additional shelters in various governorates to receive the displaced.
- **Security agencies** are maintaining security, contributing to assisting the displaced, distributing food and fuel, protecting shelters, preventing monopolies, controlling prices, and monitoring and controlling borders.
- From September 23 to October 25, 2024, General Security recorded the crossing of **348,237** Syrian citizens and **156,505** Lebanese citizens into Syrian territory.
- The Government's Emergency Committee receives international aid and distributes it to displaced people within a clear and transparent mechanism across governorates.
- According to the **Minister of Health**, the attacks on the ambulance services amounted to **201** attacks, and **163** martyrs recorded **272** wounded in the health sector since the start of the Israeli aggression on Lebanon. In addition, **55** Israeli attacks on hospitals were recorded, **36** of which were directly targeted, leading to the closure of **8** of them.
- The **Minister of Social Affairs** received the Deputy Chairman of the Military Technical Committee for Lebanon, who expressed the Italian government's support for the Lebanese people, by providing the Ministry's Social Development Centers with medical assistance.
- The **Emirati** ship "Mira" arrived today to Lebanon carrying 2,000 tons of food aid and technical needs for shelters, provided by the United Arab Emirates to the people of Lebanon as part of the "Together for Lebanon" campaign.

FREQUENCY OF ATTACKS ON LEBANON IN THE PAST 24 HOURS

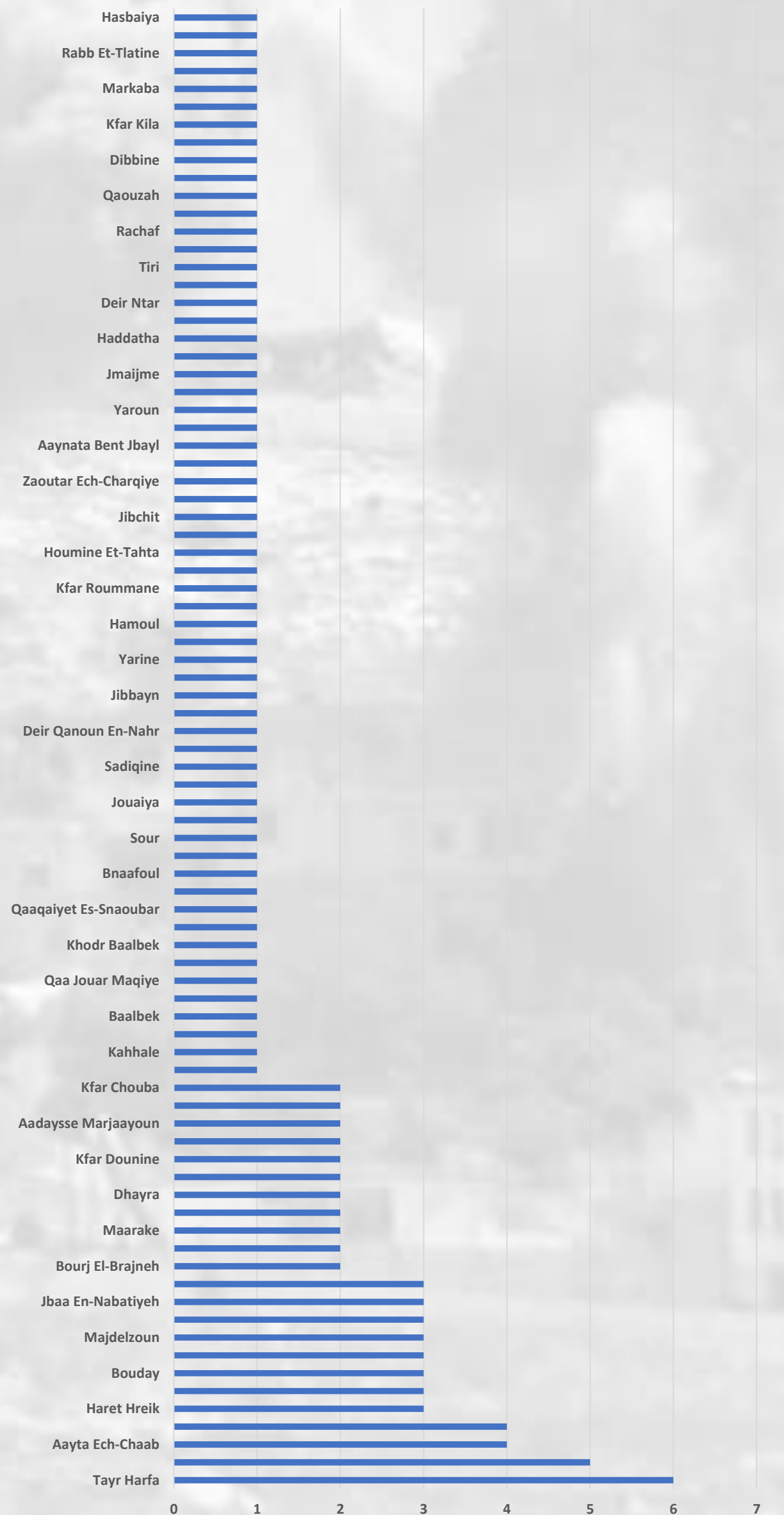
According to the daily report prepared by the National Center for Natural Hazards and Early Warning / National Council for Scientific Research on **25/10/2024**, the attacks on Lebanon are summarized as follows:



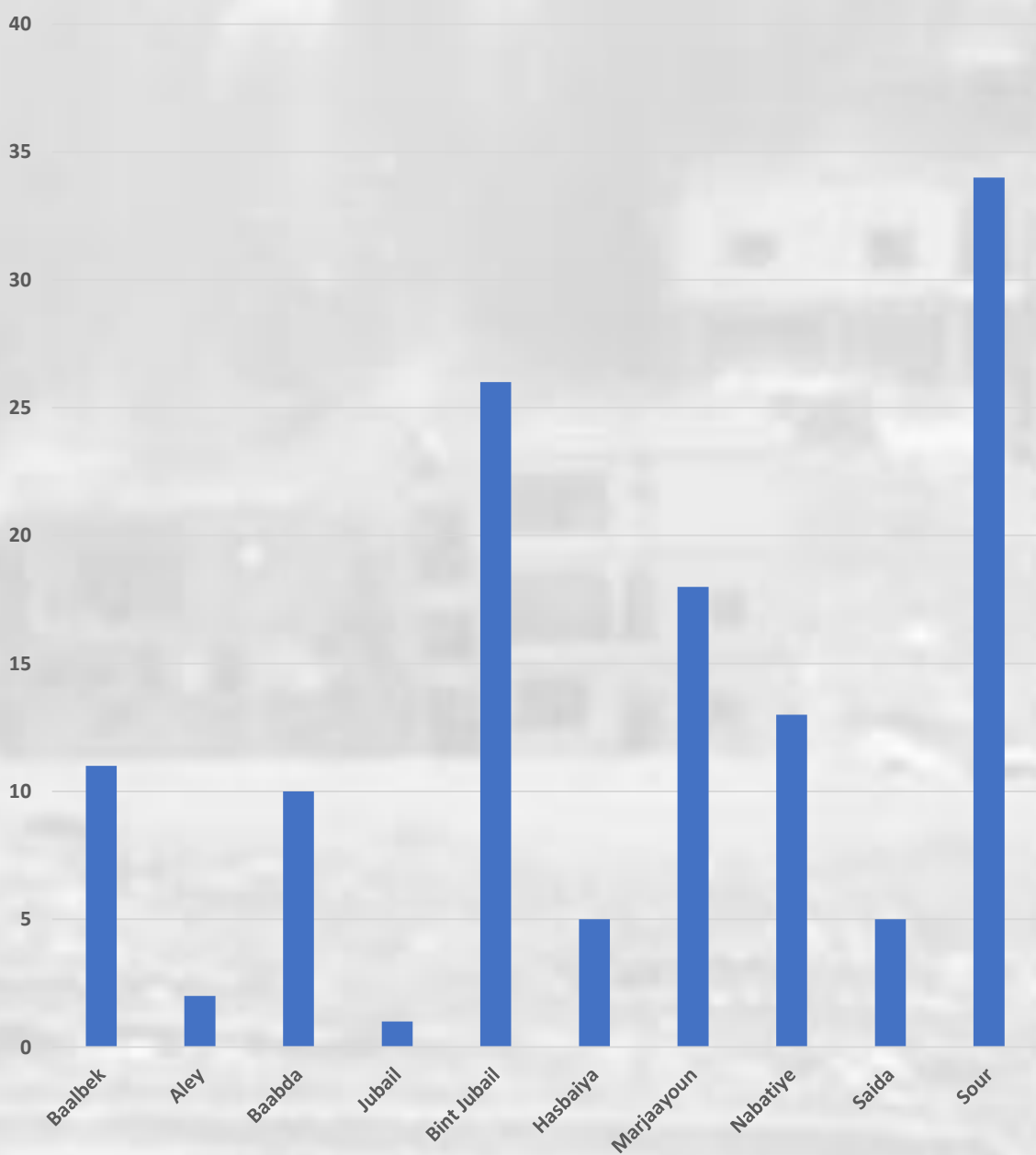
Attacks	
Cumulative	11,085
In 24 Hours	125



Number of Attacks Per Cadaster in the Last 24 Hours

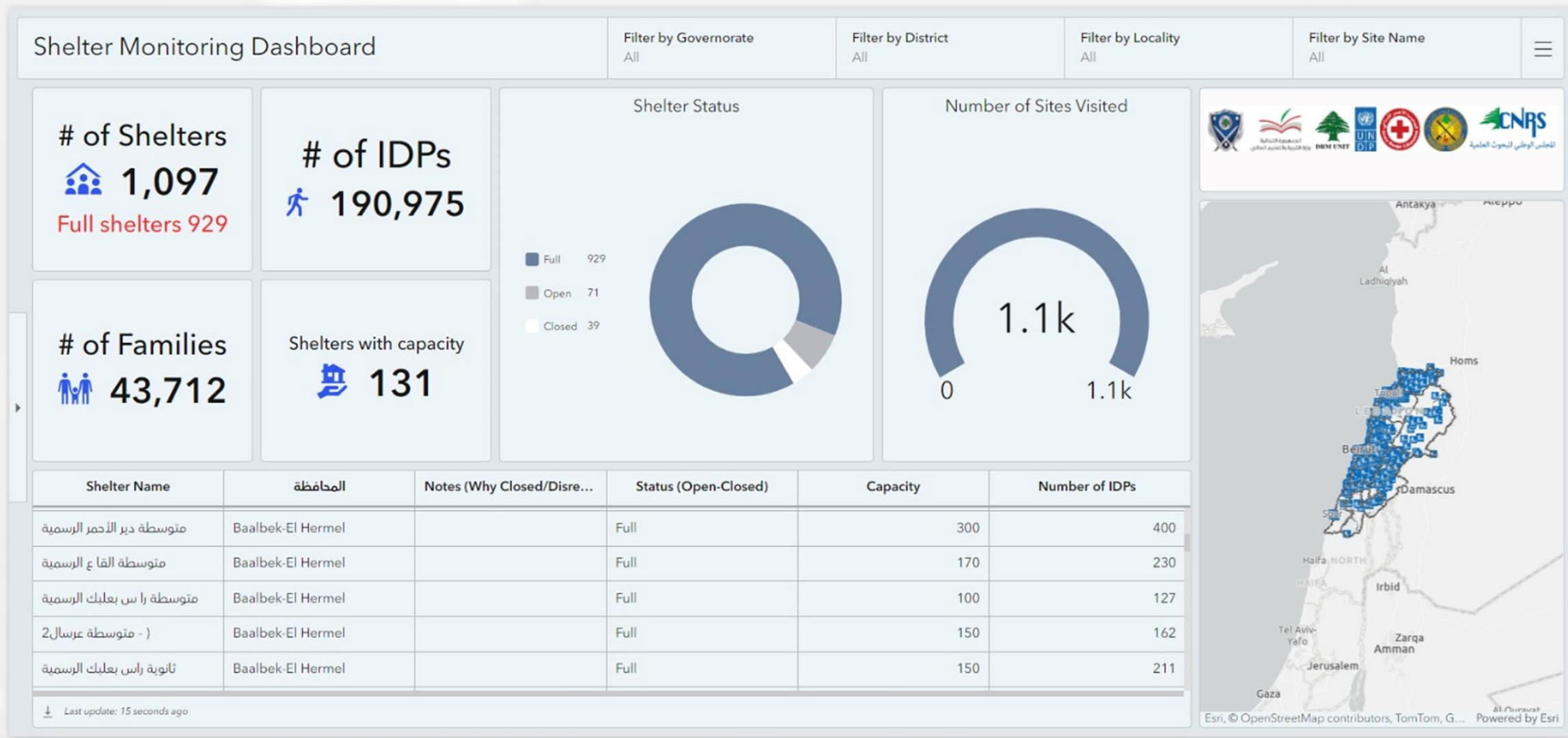


Number of Attacks Per District in the Last 24 Hours

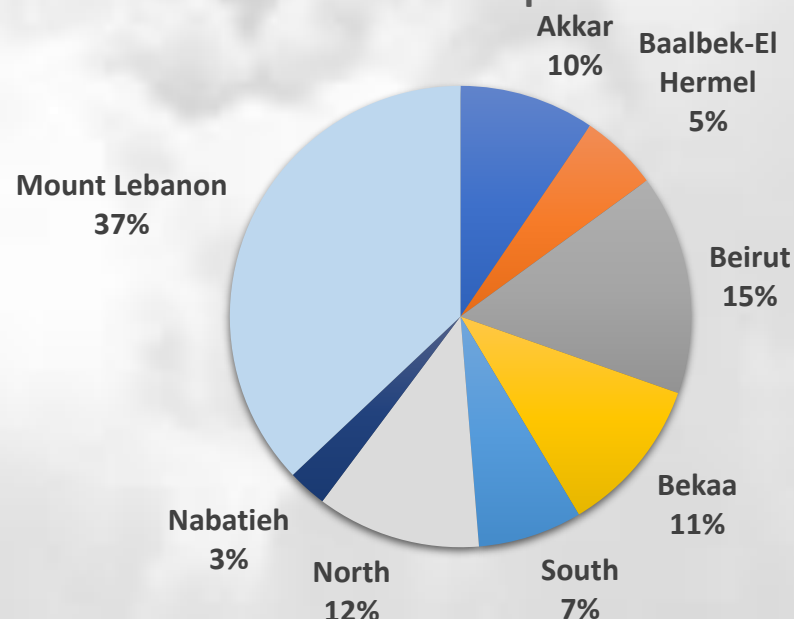


MOVEMENT OF INTERNAL DISPLACEMENT

The number of IDPs registered in shelters identified by the National Operations Room has reached **190,975** IDPs so far, according to the National Platform.



Distribution of Shelters per Governorate

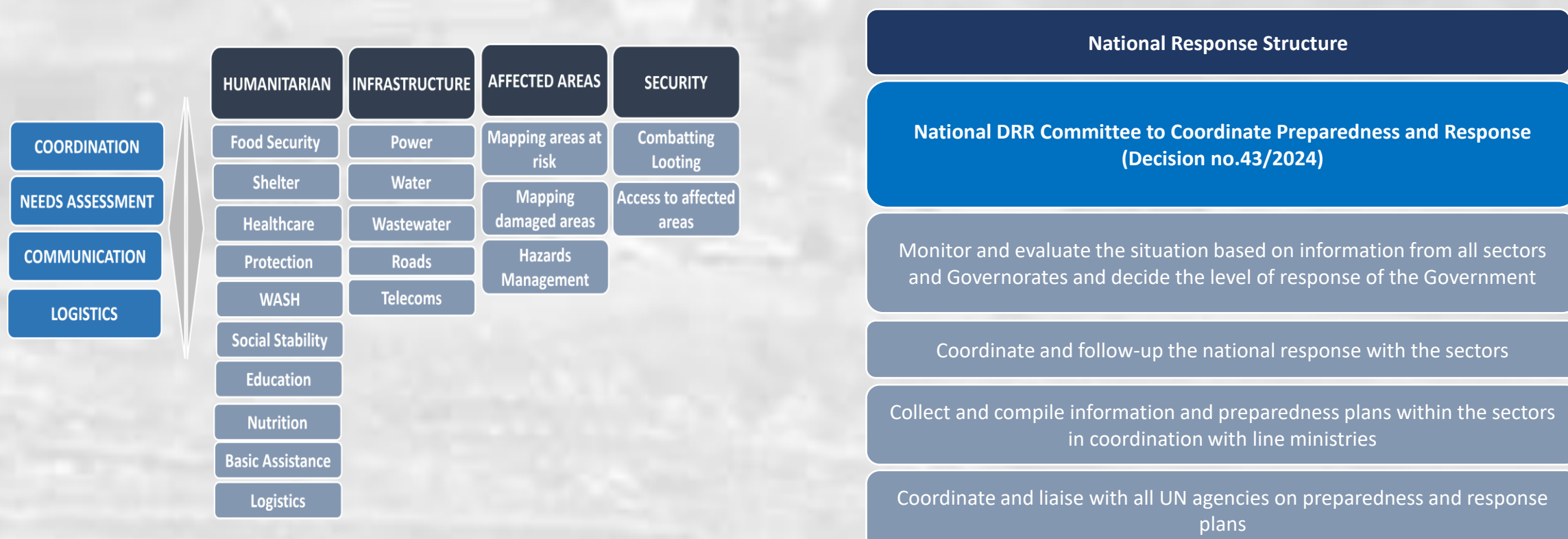


Number of IDPs Per Governorate

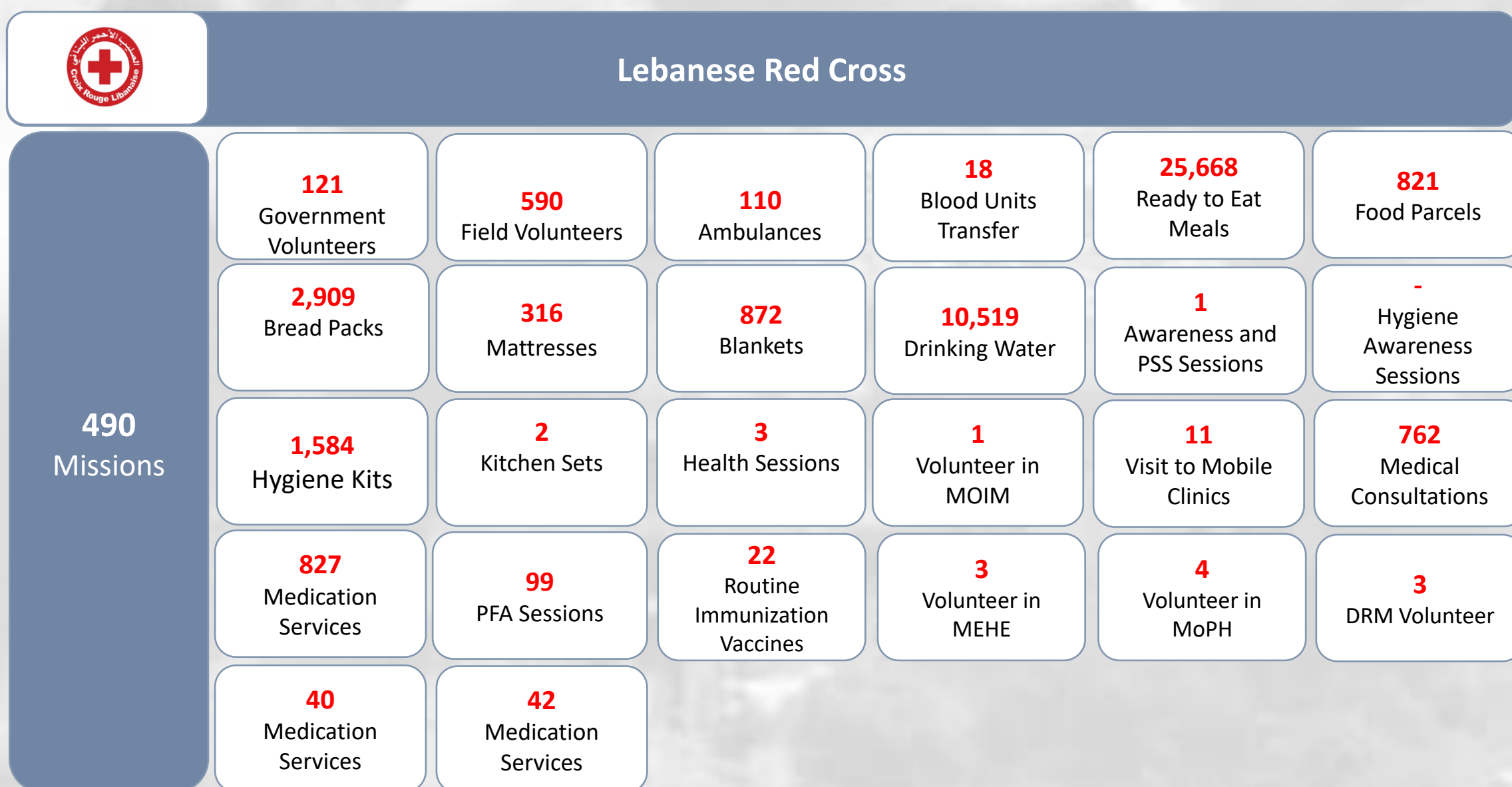
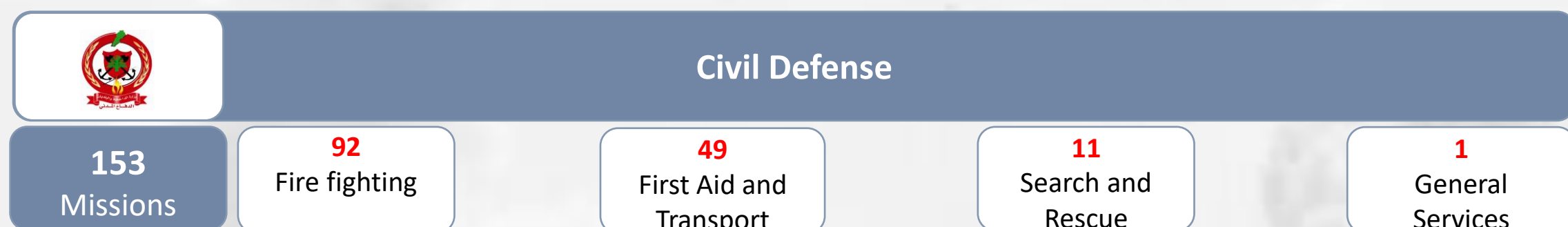


NATIONAL PREPAREDNESS & RESPONSE PLAN

At the early beginnings of the aggressions, the Lebanese Government through the National DRR Committee to Coordinate Preparedness and Response, in accordance with the National Response Framework, identified the key focus areas of its national preparedness and response plan. This plan aims to mitigate the impact of hostilities in South Lebanon and establish preparedness measure based on potential scenarios.



RESPONSE OF OFFICIAL DEPARTMENTS (IN THE LAST 24 HOURS):



- The Ministry of Social Affairs has circulated a mechanism to organize social interventions in shelters, which include psychosocial support programs and activities, child protection, women's protection, protection of people with disabilities, and protection of the elderly. This measure aims to facilitate the work of the implementing agencies in the shelters, based on ensuring the coordination and complementarity of these interventions and avoiding duplication.

ISRAELI ATTACKS ON LEBANON'S HEALTH SECTOR: HOSPITALS - PRIMARY HEALTH CARE CENTERS - AMBULATORY ASSOCIATIONS

You can access the detailed report using the following link: [Attacks on Health Sector](#)

Map of Attacks on Hospitals in Lebanon

Map of Attacks on Hospitals

	Total
Sum of Attacks on Hospitals in Lebanon	55
Sum of Hospitals attacked	36
Sum of hospitals forcibly closed	8
Sum of hospitals partially operating	7
Sum of number of Martyrs	12
Sum of number of injured	60
Sum of Damaged Vehicles	24

Attacks on PHCS in Lebanon

Maps of Attacks on PHCs

	Total
Number of attacks on primary health care centers	25
Number of primary health care centers forcibly closed	58

Attacks on EMTs in Lebanon

Attacks on Emergency Medical Teams

	Total
Attacks on EMTs	201
Martyrs	151
Injured	212
Centers	51
Ambulances	158
Fire Trucks	57
Rescue Vehicles	15

COORDINATION AND INTERNATIONAL SUPPORT THROUGH UNITED NATIONS ORGANIZATIONS:

A summary of the humanitarian assistance provided to IDPs in various Lebanese regions within the joint response plan with the United Nations organizations in Lebanon according to information received as of October 25, 2024, from the following organizations:

UNICEF	UNHCR	UNDP	WFP	WHO	OCHA	IOM	UNRWA	UNFPA	UNHABITAT
Sites		1392			Partners			119	
Sector		Total							
Basic Assistance	Pillows, blankets, mattresses, clothes, light bulbs, cooking utensils, vacuums, etc.			328,508 items benefiting 151,476 individuals in shelters					
Child Protection	Awareness sessions with parents			38,223					
Food Security	Individuals received food assistance in the form of bread, ready-to-eat meals, food rations, hot meals			<p>3,649,000 hot and cold meals were distributed in 889 shelters</p> <p>196,103 people in 422 shelters received ready-to-eat rations</p> <p>141,056 packs of bread were distributed in 466 shelters</p> <p>104,500 people received food parcel assistance (41,000 people in 244 shelters and over 63,500 outside shelters.)</p> <p>Emergency cash assistance was provided to 9,950 NPTP households – 45,675 individuals (beneficiaries and non-beneficiaries) in the 7 most affected districts in the South of Lebanon on 30 September 2024</p>					
GBV	Personal Care Kit for Women and Girls			52,256					
Health	Medications, health consultations, etc.			45,420					
Nutrition	Nutrient supplements for children and women			23,400					
Protection	Community centers open and support to individuals and communities related to protection services			9,372					
Shelter	Shelters surveyed and rehabilitated			<p>531 shelters were surveyed / Rehabilitation is ongoing in 100 shelters</p> <p>Rehabilitation has been completed in 45 shelters</p>					
WASH	Drinking water, WaSh in-kind Kits, Access to clean water (Drinking water and for domestic use), wastewater desludging, Installation of new portable Showers and Toilets.			<p>Reached 845 collective shelters. Approximately 63,634 kits have been distributed, including 48,196 hygiene kits. In addition, the sector has provided 1,279,000 liters of drinking water and 22,560 cubic meters of water for domestic use along with 891 cubic meters of wastewater that were dislodged. Almost 201 new portable showers were installed along with 46 additional toilets.</p>					
Education	Affected children reached with student kits and/or learning materials, non-specialized PSS and SEL activities, School kits and/or learning materials			33,150					
Logistics	Diesel fuel			400					
Others	Garbage bags			208					
Social Stability and Livelihood	Equipment			91					